

# LION LAND MARKETING



**Lot 2, 22 Pommer Street, Brassall Qld.  
Lot 3, Currey Street, Brassall Qld.**

*When you live here, you can walk to Bus Stop, Shops, and Schools*

**LION** LAND MARKETING

**1300 138 185**

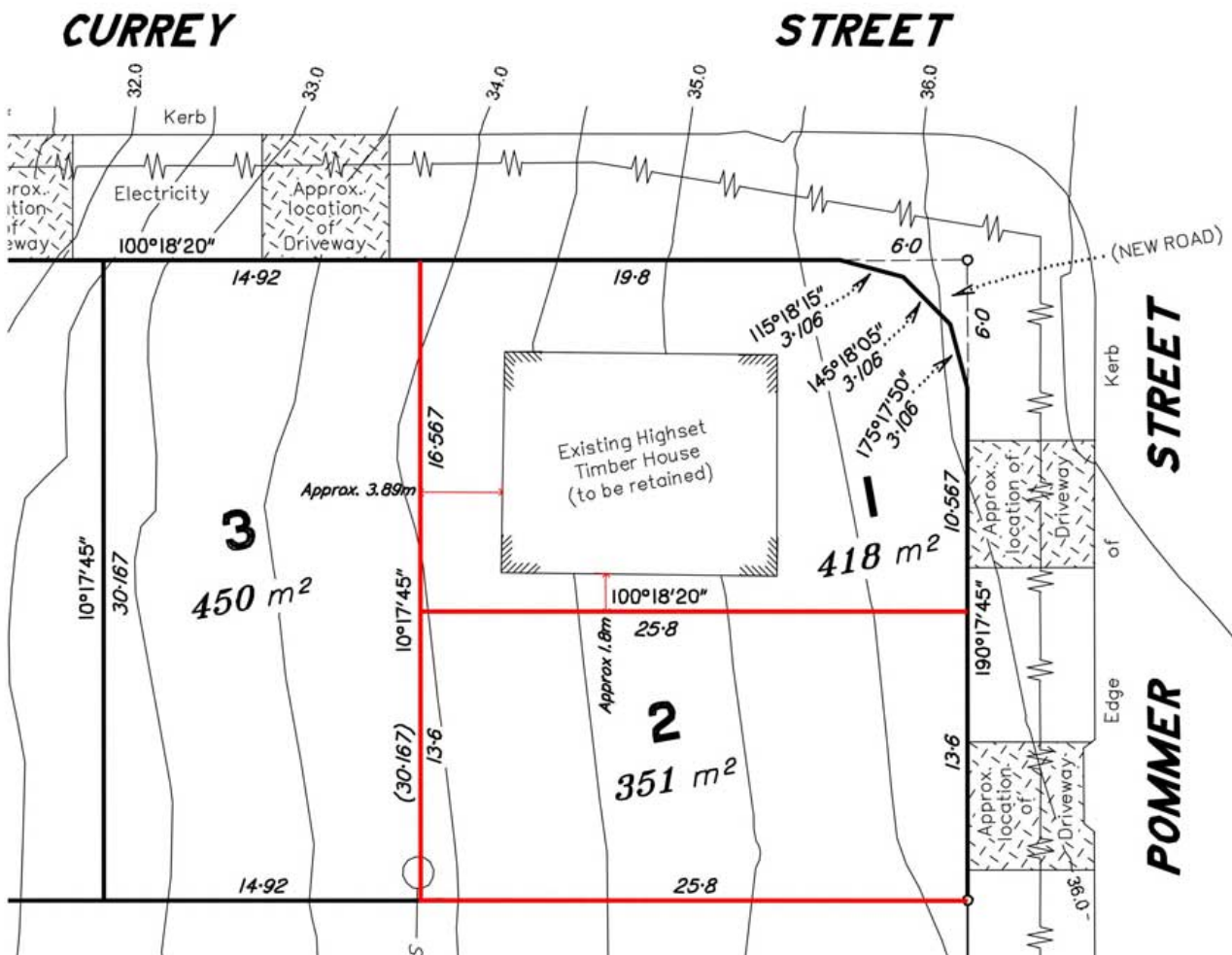
# Lot 2, 22 Pommer Street, Brassall Qld.

Now it is your opportunity to secure these flood free blocks, Lot 2, 351m<sup>2</sup> or Lot 3, 450m<sup>2</sup>, with a small deposit and pay the balance in about August.

When you live here, you can walk to Bus Stop, Shops, and Schools. Riverlink Shopping Centre, Ipswich Grammar School, Ipswich CBD are only a short drive away.

Other new homes are springing up in this area as Brassall continues to expand.

Brassall offers families and young professionals a great place to live with an abundance of modern homes. Located next to North Ipswich, Brasall has natural bikeways for those looking for a leafy change that also has a wide variety of amenities right on the doorstep.



Lot	Size	Price	Status
2	351m <sup>2</sup>	\$282,500.00	U/C
3	450m <sup>2</sup>	\$350,000.00	Available

The Developer has the DA for this development and the Operational Works are approved. Registration is expected in August 2024

# Lot 2, 22 Pommer Street, Brassall Qld.

## Great Location:

Lot 2, 22 Pommer Street, Brassall.  
Denman Park & BBQ area: about 350m. walk.  
Bus Stop: about 500m. walk.  
Pine Mountain Road Shops: about 700m. walk  
Battye Park: about 700m. walk  
Hungry Jacks: about 750m. walk  
Brassall State School: about 750m. walk  
Simmons Road Park & BBQ area: about 850m. walk  
Ipswich State High School: about 1km. Walk  
St. Joseph's Primary School: about 1.2km.  
7-Eleven Brassall: about 1.3km.  
McDonald's: about 1.4km.  
Mihi Tavern: about 1.4km.  
Brassall Shopping Centre & Woolworths: about 1.7km.  
Ipswich Adventist Primary: about 1.7km.km.  
Federation Recreation Area: about 2.4km.  
Haigh Street Quarry Bush Reserve: about 2.8km.  
CSI-Club Services: about 3.5km.  
Riverlink Shopping Centre: about 3.6km.  
Ipswich Grammar School: about 3.9km.  
Ipswich CBD: about 4.2km.  
Ipswich Rugby Club: 4.2km.  
St. Edmunds College: about 4.5km  
West Moreton Anglican College: about 8.1km.  
Lake Wivenhoe: about 29km.  
Brisbane CBD: about 41km  
Brisbane Airport: about 54km  
Gold Coast: about 96km  
Please note: (Information supplied by Google Maps)



# LION LAND MARKETING

**LION**  
LAND MARKETING



**Klaus Ferck**

The Trusted Name In Property For Over 33 Years

Principal

LION LAND MARKETING

klaus@lionrealty.com.au

M: 0409 496 066 / Ph: 07 3279 7718

www.Lionlandmarketing.com.au

## Finance Consultants:



Mortgage Achievers Pty Ltd ABN 42 377 341 554 Australian Credit Licence No 415921

### Intelligent Finance Solutions

***Our professional services include:***

- Tailored finance solutions
- Sourcing lowest cost mortgage finance
- Loan structure advice
- Construction loans

**Please contact Renee Black**

0413 957 781 - rblack@mortgageachievers.com.au

## Solicitor:

### Tiresa Divitini Conveyancing Services

Tiresa Divitini

M: 0416 198 610

E: [tdivitini@outlook.com](mailto:tdivitini@outlook.com)



The fees for a purchase are \$880.00. I offer Lion Realty clients a discount of \$75.00, bringing it down to only \$805.00 plus disbursements and searches,

I service the whole of the Brisbane area. I am happy to help clients after hours and on week-ends.